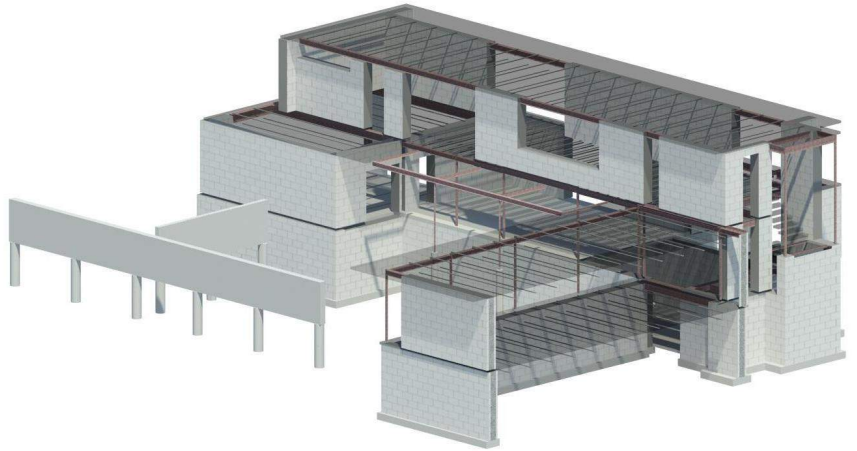


Hadi Residence

SHERWOOD PARK, ALBERTA

\$1.65 Million Budget | 5,600 sq.ft. total area | Hambro, Structural Steel, Reinforced Concrete and ICF Construction | completed early 2014



Ethos Engineering's first project with Louis Pereria and Thirdstone saw us employing commercial-grade structural systems and detailing applied to a single-family scale project. Extensive usage of glazing, large slender cantilevered roofs and floors, setback building lines and meticulous architectural attention to detail made this project much more involving than its modest size might suggest.

Considerable efforts were invested by Ethos in our optimized employ of a mixture of conventional concrete construction, Hambro's composite steel joists, and ICF formed construction to achieve the feel and finish that Thirdstone was after at a price that the client and the builder could afford.

To help further aid economy and constructibility Ethos' services extended well-above and beyond standard structural consulting services in our provision of numerous details and advice to the builder who had limited experience in commercial-grade concrete construction and suspended slabs.

Late discovery of deep fill conditions on the site were taken in stride and resulted in a recommendation from Ethos Engineering Inc. to extend most of the foundations deeper than the original design intent. This proved to be a great overall value to the client to was able to avoid the cost and complexity of mixed foundation systems and provided a large increase in utility and future living space in the basement at a minimal cost.

Landscaping features and other detached structures also benefited from Ethos design and documentation to help complete the integration of the building to its surroundings.



ETHOS
ENGINEERING

Superior Structural Value
info@ethos-engineering.com