

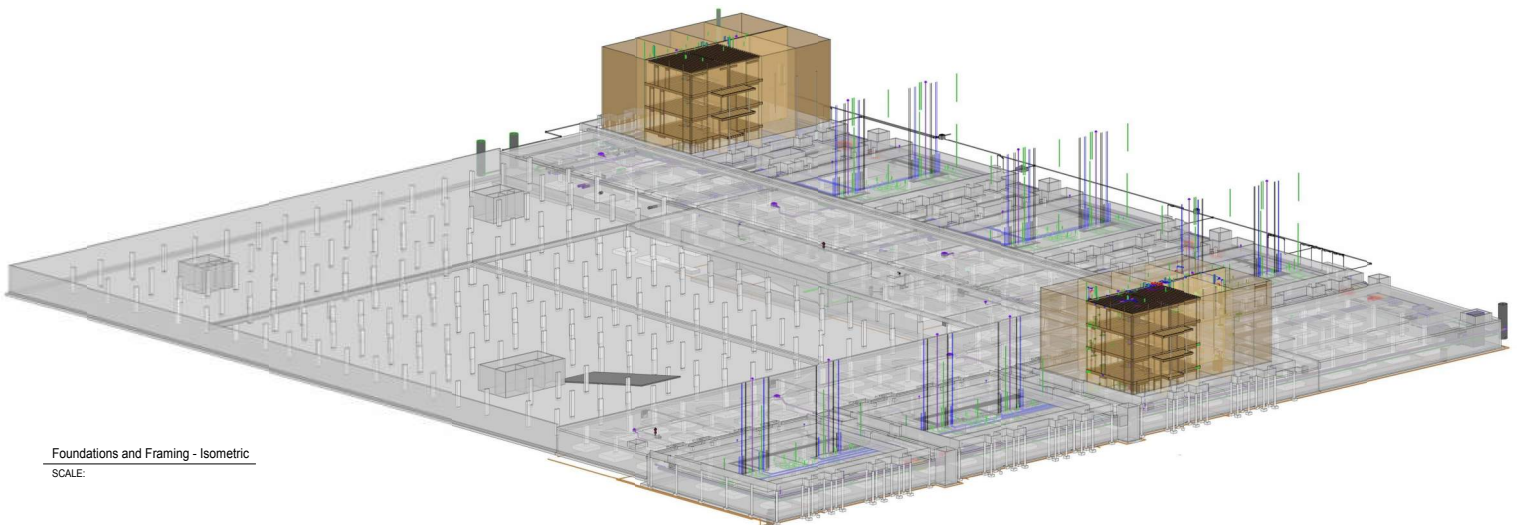
# Malmo Plains Residential Development

EDMONTON, ALBERTA

\$95.0 Million Budget | 700,400 sq.ft. total Residential & Parkade | 482 Units of Apartment and Town Home Residences | Wood and steel framing on underground parking over 225,000 sq.ft. on one level | Construction scheduled to start spring 2015



One of Ethos Engineering Inc.'s largest projects to date under the lead of Westcorp proposes to redevelop a large section of U of A farm land into nearly five hundred units of walk-up townhomes and mid-rise apartments. With an underground parkade covering almost the entire site footprint it was clear from the outset that key front-end decisions could yield significant budget impacts when multiplied by 700,000 square feet. To facilitate this Ethos took an early lead in presenting options to the design and development team for optimization of the parkade layout, support locations and other considerations that resulted in higher yields for parking, lighter structural systems & foundations, significant reductions in build-cost and overall improvements in the project plan. Westcorp's development team was provided with a steady-flow of Ethos preliminary design options, models, sketches and quantities. Their team was able to review, price and evaluate a number of options then proceed to make well-informed decisions about foundation options, phasing interfacing, structural systems and building assemblies. The seamless Revit model exchanges between Ethos, Kasian Architects and TWS Mechanical Engineering helped to integrate the design and streamline the process of sharing and implementing design improvements. The time-savings in model exchanges allowed everyone to focus on higher-order activities in the design process and resulted in great value to the project and client.



Foundations and Framing - Isometric  
SCALE:



Superior Structural Value  
[info@ethos-engineering.com](mailto:info@ethos-engineering.com)