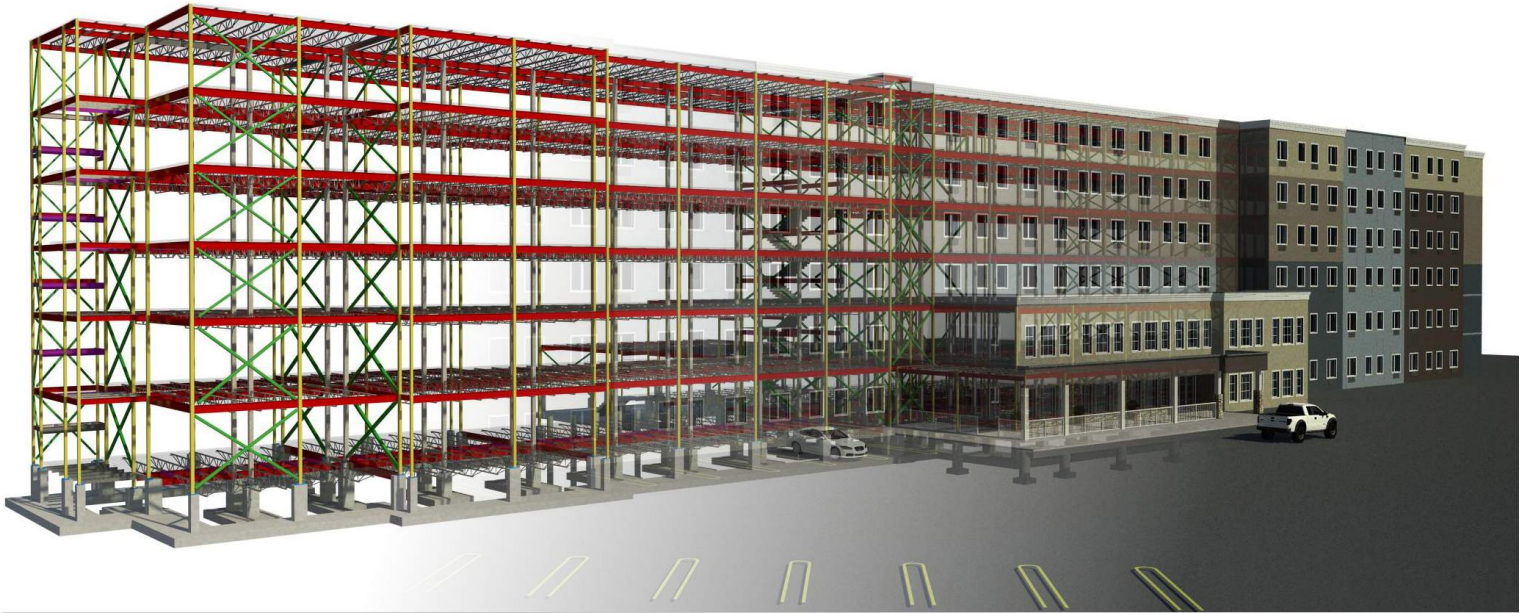


Grande Spirit

GRANDE PRAIRIE, ALBERTA

\$26.5 Million Budget | 150,000 sq.ft. mixed-use senior's residence | Optimized structural steel framing
138 suites senior's residences | 28,300 sq.ft. senior services & amenity space
scheduled to be completed late 2016



Engaged by Whitemud Iron Works under a design-build delivery method Ethos Engineering Inc. was tasked with redesigning and optimizing the complete structural steel frame of this large senior's building project. Through our value-driven design methods and the collaborative efforts between Ethos' design team and Whitemud Iron Works we were able to safely reduce the steel framing by 340 metric tonnes resulting in a direct cost savings to the client of \$350,000 as compared to the original superstructure design by another engineering firm.

The client acceptance of the Whitemud/Ethos proposed design-build alternate came only weeks before the start of fabrication and demanded an extremely compressed design and documentation schedule from Ethos' designers. Through close collaboration between Whitemud, Ethos and the architect we were able to streamline the traditional lines of communication and arrive at efficient and effective solutions to the various challenges that were presented in the building framing redesign process.

A flexible and responsive exchange of continuously updated design information was established between Ethos and Whitemud to allow detailing and fabrication of portions of the building to proceed prior to Ethos' completion of construction documents. Ethos follow-through with shop drawing reviews and comments often within a few hours of receipt was essential to maintain Whitemud's detailing and fabrication schedule.

The successes achieved with the Grand Spirit senior's residence provide an example of the challenges that can be overcome with the combination of Ethos Engineering's value-focused approach to structural engineering consulting and close collaborative design coordination between consultants and contractors.



ETHOS
ENGINEERING

Superior Structural Value
info@ethos-engineering.com