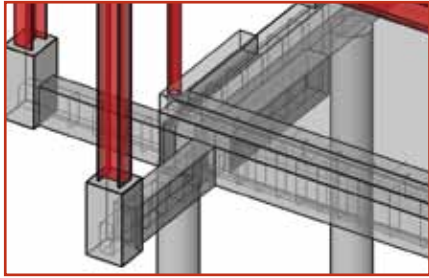


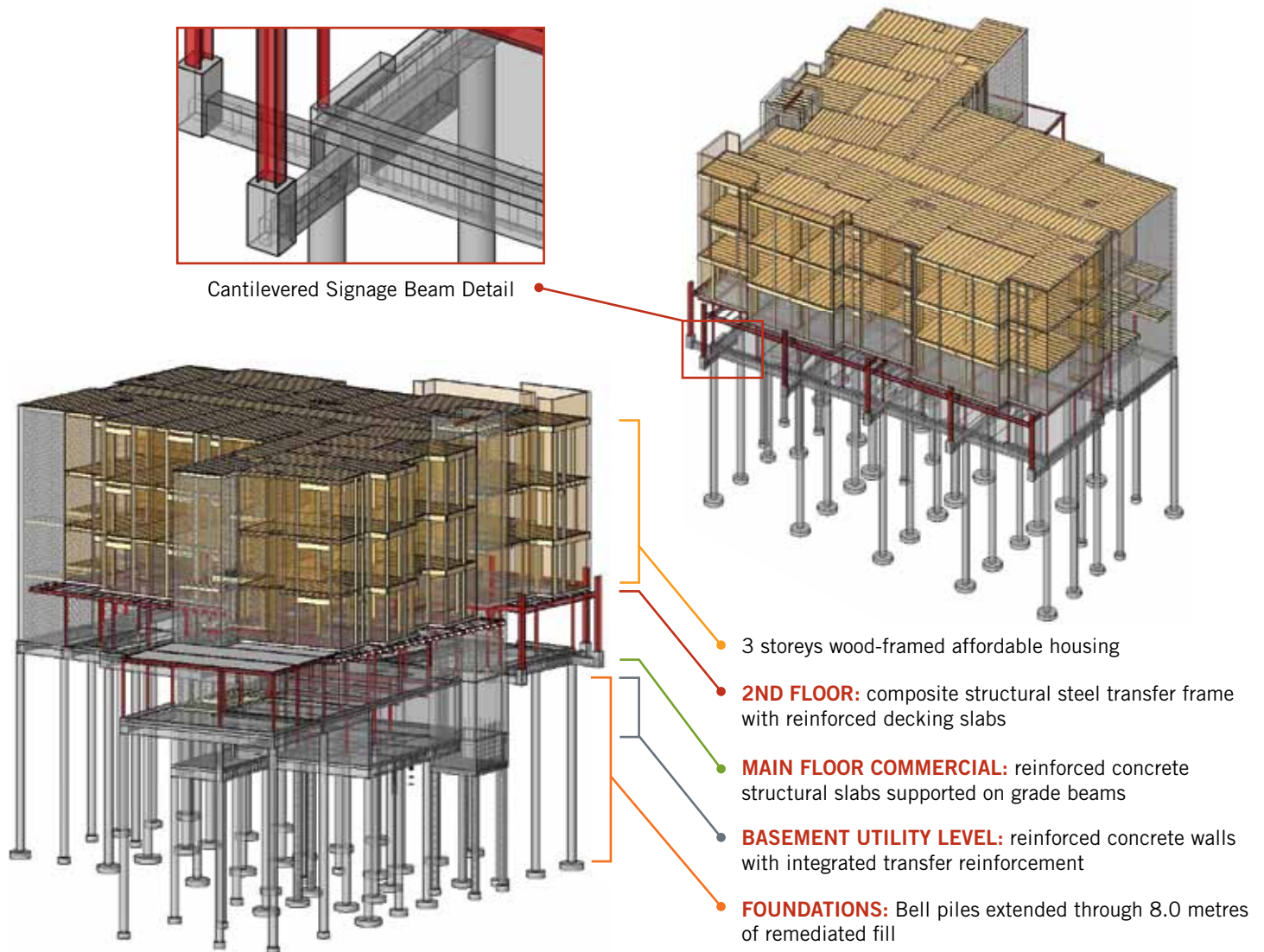
CRHC Stony Plain Road

EDMONTON, ALBERTA

\$3.6 Million budget | 24,900 sq.ft. total Mixed-use | 27 units affordable housing
5700 sq.ft. commercial | Completed summer 2011



Cantilevered Signage Beam Detail



The CRHC Stony Plain mixed-use project demanded a collaborative and integrated approach to the design of the building. A late revelation of deep fills on the site, the detailing demands of a publicly tendered contract award, innovative use of four structural materials and complex architecture packed into a small building concept all made the project much more involved than a typical affordable housing project. Through the efforts of the design team headed-up by Douglas Sollows Architect the tenders were received with a tight spread and the project was successfully completed by Delnor Construction in mid-2011.

We introduced several innovations in our structural design that resulted in cost-savings to the owner such as the cantilevered grade beam detail illustrated above. Required to support commercial signage fronting onto Stony Plain road this detail allowed us provide adequate support to the signage while omitting seven bell piles resulting in a cost-savings of \$20,000 to the owner.